

Sage Enterprise Suite — Advanced Consolidations

Reporting Features

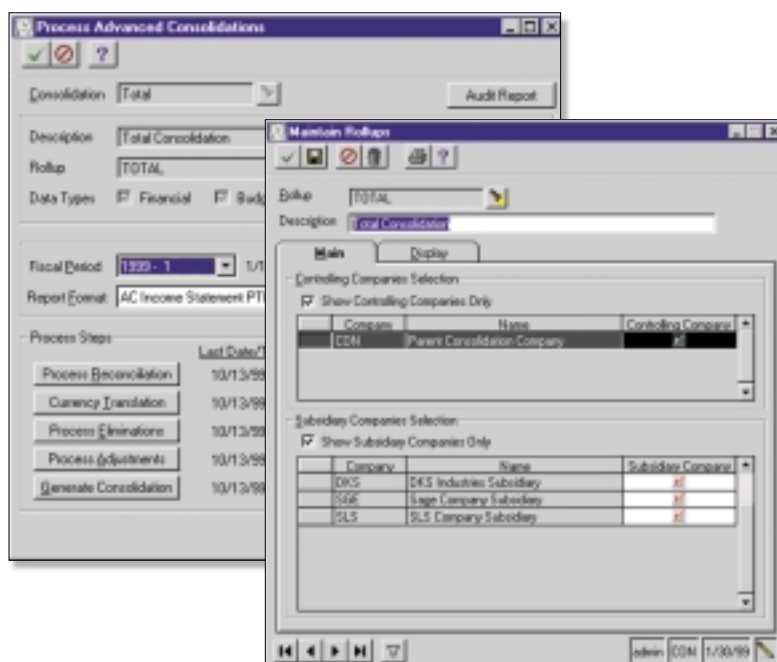
- Tailor Advanced Consolidations forms to your organization's design requirements
- Export all report data to an external file. Data types supported include ASCII text, delimited, Excel, Lotus 1-2-3, HTML, RTF or Microsoft Word
- Output any report to the screen, a printer or a variety of file formats
- Create customized, presentation-quality reports through Crystal Reports software

Reports

- Year-to-date Current vs. Prior Year Income Statement
- Current Period Income Statement
- Current Period-to-date and Year-to-date Income Statement
- Current vs. Prior Year Balance Sheet
- Current Year-to-date Cash Flow Statement
- Current Period-to-date Cash Flow Statement
- Current Year-to-date Budget Variance Income Statement
- Current Period-to-date Budget Variance Income Statement

Sage Enterprise Suite of Modules:

General Ledger, Accounts Payable, Accounts Receivable, Cash Management, Financial Reporting, Web Reports, Fixed Assets, Multicurrency Management, Advanced Allocations, Consolidations, Advanced Budgeting, Purchase Order, Sales Order, eCustomer, Inventory Management, Inventory Replenishment, Human Resources, Manager and Employee Roles, Payroll, Customizer, Application Framework, Module Source Code



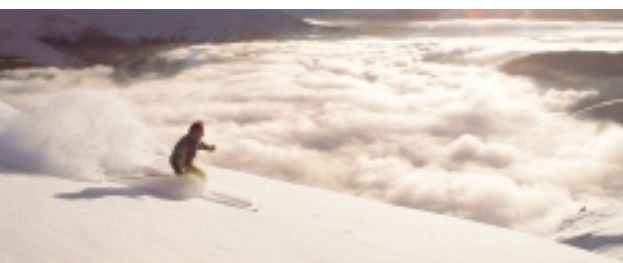
Streamline Consolidation of Financial Data from Every Entity of Your Business

The Sage Enterprise Suite's Advanced Consolidations module keeps you in firm control of your business by giving you the power to quickly gather and consolidate financial data from every entity in your organization. No matter how widespread your business, how many currencies and charts of accounts are involved, or how fast your business is growing and changing, Advanced Consolidations can provide you with a comprehensive, highly accurate, up-to-date, and meaningful view of every aspect of your organization. It is a key component of Sage Enterprise Suite, a highly reliable, robust and integrated series of business applications that delivers a flexible, scalable and full-featured total e-business management solution.

Powerful enough to present a group of companies as a single legal entity and to generate periodic, quarterly and annual reports in no time, Advanced Consolidations is flexible enough to work seamlessly with all Sage Enterprise charts of accounts and ledgers, as well as with different accounting systems. This module provides multiple views of your data — including legal, management, current year and prior year information — in the familiar Excel format, so there is no special training involved. You can save time while gaining the flexibility to more effectively deploy internal resources devoted to gathering financial information.

Advanced Consolidations also creates an accurate audit trail of input values, foreign exchange gain/loss postings, elimination postings and manual journal entries. Business transactions and foreign operations recorded in different currencies can be restated in your home currency, U.S. dollars or any other reporting currency within GAAP.

continued on reverse side



Sage Enterprise Suite — Advanced Consolidations

System *Easily generate periodic reports and dramatically reduce time spent gathering financial information.*

- Quickly and easily define intercompany accounts
- Classify the elimination variance account for posting translation gains/losses
- Specify the translation method and exchange schedule for each natural account
- Define unrealized gain/loss accounts
- Identify the home currency for each subsidiary

Mapping *Map your subsidiary accounts to the Consolidation chart of accounts, presenting your group of companies as a single legal entity.*

- Map subsidiary charts of accounts to the Consolidation chart of accounts by segment and segment values
- Specify whether to eliminate by natural account or validated segments
- Roll up several subsidiary natural accounts into one Consolidation natural account

Journal Entries *Post financial data from all of your business entities, giving you total control no matter how widespread your operations may be.*

- Enter and post directly to the General Ledger subsidiary beginning balances and any necessary adjustments in the Consolidations company

Periodic Consolidation Activity *Gather financial information on your schedule — be it daily, monthly or quarterly.*

Import Subsidiary Company Data

- Quickly and easily establish a default exchange schedule and translation method for Balance Sheet and Income Statement accounts
- Create elimination groups for automated eliminations of intercompany entries
- Set up an unlimited number of rollups (Management, Legal, etc.)
- Define the currency to use when generating consolidated reports
- Import subsidiary company data from a local or remote Sage Enterprise database, or a third-party General Ledger

Process Reconciliation

- Match intercompany data so errors can be detected and reviewed
- Define tolerance values acceptable for reporting
- Perform matching in the reporting currency

Currency Translation

- Translate transactions into the reporting currency using exchange schedules set up in the Multicurrency Management module
- Apply rates using period-end or historical values

Process Eliminations

- Eliminate the effect of intercompany transactions and capital transfers
- Create balancing entries for mismatches
- Post offsets to the elimination variance account

Process Adjustments

- Process subsidiary beginning balances (a one-time function) and adjustments made to the consolidation company for inclusion in the consolidated reports

Generate Consolidations

- Use several template reports in the familiar Excel format to generate consolidation reports. Examples include:
 - Income Statements
 - Balance Sheets
 - Cash Flow Statements
 - Budget Variances
 - Income vs. Budget Statements

Audit Report

- Keep track of all changes to an account resulting from imported data, translation gains and losses, intercompany postings, and manually entered beginning balances and adjustments