

Sage Enterprise Suite — Inventory Management & Replenishment



Web-Based Reporting

All Inventory Management and Replenishment reports can be generated and viewed through Microsoft Internet Explorer with our Web Reports module, with the same high level of security as with the module's standard output.

Reporting Features

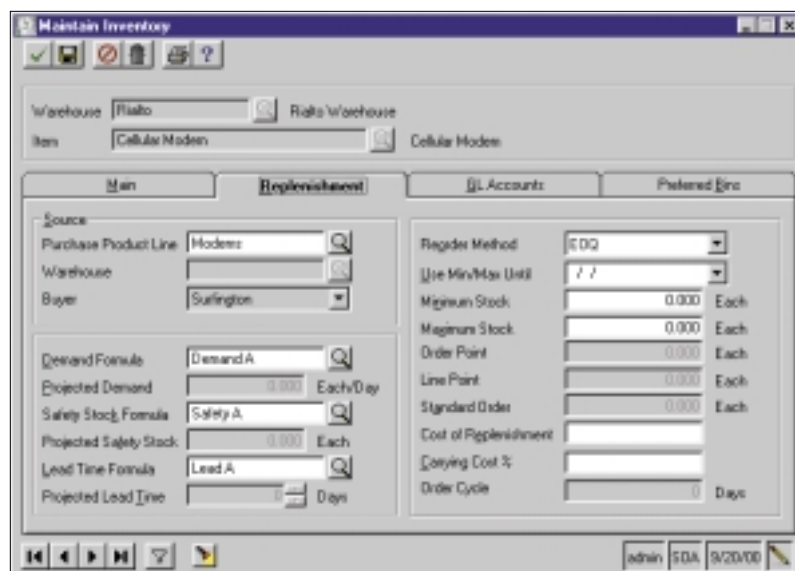
- Tailor Inventory Management and Replenishment report forms to your organization's design requirements
- Export all report data to an external file. Data types supported include ASCII text, delimited, Excel, Lotus 1-2-3, HTML, RTF or Microsoft Word
- Create customized, presentation-quality reports through Crystal Reports software

Reports

- Customer and Vendor Price Lists
- Bin Labels
- Physical Inventory and Count Cards
- Physical Reconciliation
- Unusual Usage
- Transaction History and Detail
- Trial Balance
- Inventory Valuation
- On-Hand Lot/Serial
- Lot/Serial History
- Stock Status
- Inventory Cost
- Lead Time Exception
- Inventory Analysis and Performance
- Recommended Replenishment

Sage Enterprise Suite of Modules:

General Ledger, Accounts Payable, Accounts Receivable, Cash Management, Financial Reporting, Web Reports, Fixed Assets, Multicurrency Management, Advanced Allocations, Consolidations, Advanced Budgeting, Purchase Order, Sales Order, eCustomer, Inventory Management, Inventory Replenishment, Human Resources, Manager and Employee Roles, Payroll, Customizer, Application Framework, Module Source Code



Improve Your Inventory Controls and Customer Service

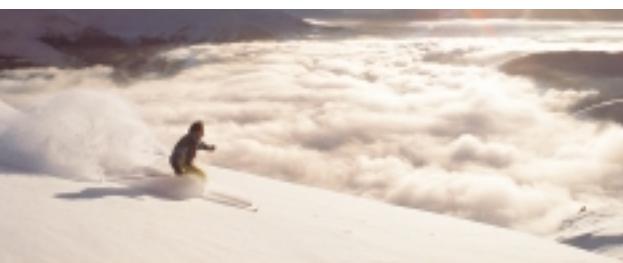
The Sage Enterprise Suite Inventory Management and Replenishment modules put you in firm control of your distribution business through every step of your inventory process. This powerful combination gives you the tools you need to manage your warehouse and inventory levels more effectively, enhancing customer satisfaction while maximizing profits.

These modules are key components of the Sage Enterprise distribution series, which has been designed with input from supply chain experts to meet the needs of the distribution industry.

The Inventory Management module's warehouse-centric design lets you track costs and sales histories by warehouse, and enables you to use multiple bins in the same warehouse for a single inventory item. Inventory Management helps you quickly locate the items your customers are requesting, and also allows you to continue taking orders during inventory cycle counting, ensuring that your business continues to operate at peak efficiency. Inventory Replenishment provides the demand forecasting tools you need to maximize your return on investment by accelerating inventory turnaround, while still maintaining an adequate stocking level of the products your customers demand.

Nearly all mid-level distributors can benefit from Sage Enterprise Suite's advanced inventory management and replenishment system, which provides the most comprehensive and flexible set of inventory management and forecasting tools available today.

continued on reverse side



Sage Enterprise Suite — Inventory Management & Replenishment

System Implementation Options *Maximize your inventory investment by establishing a variety of system options to meet your unique business requirements.*

- Configure the Inventory Management and Replenishment modules to meet your specific business needs
- Identify a wide range of inventoried and non-inventoried items
- Define the inventory calendar of your choice
- Set up multiple price lists (in multiple currencies), multiple companies, and multiple warehouses and bins
- Implement pricing for specific contracts and volume price breaks
- Specify whether or not to allow negative inventory quantities

Inventory Item Attributes *Realize your maximum profit potential by providing flexibility for all aspects of your business — and accounting for every eventuality.*

- Designate an inventory item as seasonal
- Specify a sales product line or a purchase product line
- Designate whether or not an item can be back ordered or drop-shipped
- Assign each item to an item class
- Allocate each item to one or more bin locations per warehouse
- Classify separate units of measure for stocking, selling, buying and pricing each item
- Employ an unlimited unit of measure conversions for items
- Establish a variety of item attributes for more efficient processing
- Apply inventory attributes on a warehouse-by-warehouse basis

Inventory Valuation and Costing *Choose costing methods and specify price breaks to best fit your business and industry.*

- Choose from five different costing methods, depending on your objective
- Set up vendor price lists
- Define multiple break and price tiers for each vendor/item combination
- Perform cost and quantity adjustments for each inventory item
- Specify estimated landed costs
- Track period balances and valuations on an inventory period basis
- View current quantities and valuations for inventory items online

Inventory Management Processing *Make sure that all of your delivery promises are kept and on-hand stock balances are accurate with Sage Enterprise's advanced warehouse management and inventory transaction capabilities.*

- Support an unlimited number of user-defined inventory transactions
- Attach documents or images to any inventory item or transaction
- View sales and purchase history for each inventory item by warehouse
- Examine stock status by bin
- View available quantity of an item as on-hand, pending, on-SO, or on-PO
- Assign general ledger reference codes and reason codes at the line level of various transactions

Physical Inventory *Receive and ship orders during inventory cycle counting, so your business never misses a beat.*

- Execute a complete physical inventory process without the need to interrupt other business processes, such as receiving and shipping
- Perform cycle counts based on user-defined criteria, such as items, bins, inventory hits or inventory turns
- Create general ledger and adjusting transactions automatically

Inventory Replenishment *Stock the right products, at the right time, at the best price with Inventory Replenishment's weighted average capabilities.*

- Accurately forecast future demand, thereby defining appropriate purchasing requirements
- Fine tune inventory levels to minimize carrying costs without reducing customer service levels
- Calculate an expected forecast for a specified future period by accounting for the number of working days in each month, the appropriate weighting of historical demand, any manual adjustments required, and more
- Combine lead times with demand forecasts to calculate appropriate inventory orders for you, generating actual POs if necessary
- Maintain the right amount of stock for your customers' peak times with seasonable forecasting
- Maintain an unlimited number of user-defined replenishment formulas