

Sage Enterprise Suite — Multicurrency Management

Web-Based Reporting

All Multicurrency Management reports can be generated and viewed through Microsoft Internet Explorer with our Web Reports module, at the same high level of security as with the module's standard output.

Reporting Features

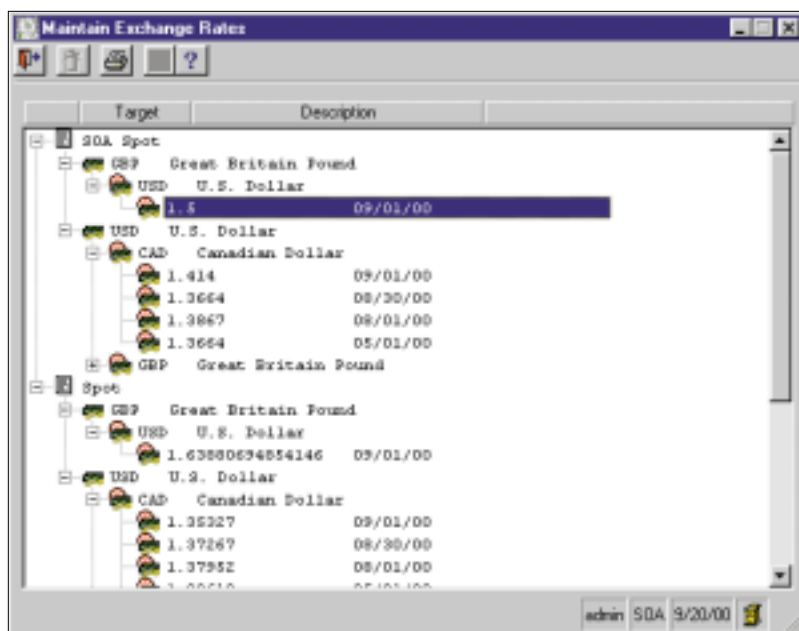
- Tailor Multicurrency Management report forms to your organization's design requirements
- Export all report data to an external file. Data types supported include ASCII text, delimited, Excel, Lotus 1-2-3, HTML, RTF or Microsoft Word
- Output any report to the screen, a printer or a variety of file formats
- Create customized, presentation-quality reports through Crystal Reports software

Reports

- Account Trial Balance
- Receivables and Payables
- Customer and Vendor Trial Balance
- Audit — includes Accounts Receivable, Accounts Payable and the General Ledger Revaluation Registers

Sage Enterprise Suite of Modules:

General Ledger, Accounts Payable, Accounts Receivable, Cash Management, Financial Reporting, Web Reports, Fixed Assets, Multicurrency Management, Advanced Allocations, Consolidations, Advanced Budgeting, Purchase Order, Sales Order, eCustomer, Inventory Management, Inventory Replenishment, Human Resources, Manager and Employee Roles, Payroll, Customizer, Application Framework, Module Source Code



Capitalize on International Opportunities

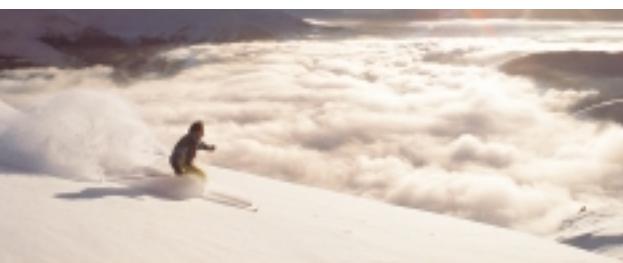
The Sage Enterprise Multicurrency Management module allows you to optimize your international opportunities by providing a streamlined, flexible way to manage multiple currencies, exchange schedules and currency fluctuations. This system is a key component of Sage Enterprise Suite, a highly reliable, robust and integrated series of business applications that delivers a flexible, scalable and full-featured total e-business management solution.

You can save time and streamline your business processes by using the power of automation to create and maintain an unlimited number of currencies and exchange rate schedules. You can use Multicurrency Management to update exchange rates on a daily basis and record realized or unrealized gains and losses due to currency fluctuations to the General Ledger accounts assigned to the currency. Realized gains and losses are automatically posted when the transaction is settled.

The Sage Enterprise Multicurrency Management module gives you the critical data you need for more informed decision making and improved trend analysis. Standard reports and registers create a complete audit trail of detail activity before posting. And with the ability to retain detail postings, and monthly summaries for an unlimited number of years, you can gain additional insight by having more information at your disposal for year-to-year comparisons.

Multicurrency Management helps you maximize productivity, too. Enter the data just once in Multicurrency Management, and you'll be able to leverage multicurrency capabilities including revaluation functions, across other Sage Enterprise modules, including Accounts Payable, Accounts Receivable, Sales Order, Purchase Order and General Ledger.

continued on reverse side



Sage Enterprise Suite — Multicurrency Management

System Implementation Options *Set up an unlimited number of exchange schedules for maximum flexibility and time savings.*

- Accommodate an unlimited number of currencies
- Customize your multicurrency management system to the specific needs of your company in the functional areas of integration with other Sage Enterprise modules, posting options, revaluation methods, and default exchange rate schedules
- Create an unlimited number of exchange rate schedules to use during transaction entry, and share rates among many customers or vendors
- Set up standard exchange rates for the sell rate and buy rate for specific companies or for all companies
- Update exchange rates daily or specify a valid date range
- Determine whether to use the detail or summary method to revalue AP or AR transactions

Currency Setup *Automatically perform currency conversions for all accounting transactions, and post gains and losses upon transaction settlement.*

- Use Multicurrency Management's preloaded library of 27 major currencies and their ISO symbols
- Maintain an unlimited number of currencies to support a home currency for your company and natural currencies for transactions abroad
- Handle cash receipts, invoices and credit memos in different currencies
- Specify General Ledger accounts for realized or unrealized exchange gains or losses by currency

Exchange Rate Schedules *Create a wide variety of exchange rate schedules, and update exchange rates daily from the source currency to the target currency.*

- Apply exchange rate schedules to a specific company or to all companies defined in Sage Enterprise
- Classify schedules as general for all business partners, or specific to a customer or vendor, or to each customer or vendor location
- Define effective dates that support daily, monthly or any other periodic rate
- Control whether exchange rate overrides are allowed during transaction entry
- Derive cross rates for settlement of transactions using exchange rates that are not directly linked

Revaluation *Easily record gains and losses, due to fluctuations in currency rates, to the General Ledger account assigned to the currency.*

- Revalue the natural currency of transactions or accounts to reflect their current value, and automatically post the unrealized gains or losses
- Revalue invoices, vouchers, or GL accounts marked as "Revalue"
- Automatically reverse unrealized gain or loss entries
- Rerun the revaluation process as often as needed to accurately reflect your cash position

Period-End Processing *Eliminate the complication of having to factor multiple currencies and exchange rates into your heavy period-end transaction volume.*

- Specify reports that print automatically at period-end
- Purge data at any time, or at period-end based on user-defined retention time
- Post to current and future periods, or reopen and post to a previously closed period
- Generate audit reports such as the revaluation registers for Accounts Receivable, Accounts Payable and General Ledger to reflect revalued transactions

Security *Organize security groups and assign permissions to restrict access to any confidential transactions and account information.*

- Set up specific security groups, thus limiting access to a defined group of users
- Establish access permissions such as display only, excluded, add/change/delete, or supervisory