



MAS 90®

for Windows

MAS 200™

Client/Server

e-Business Manager Overview

- Get your e-commerce Web site up and running quickly with easy, out-of-the-box configuration
- Purchase the functionality you need as your business grows, due to its modular design
- Customize your Web site look and feel using the included style sheet editor
- Enjoy low cost of entry and maintenance
- Specify e-mail triggers to automatically send e-mail messages based upon selected events
- Host your Web site through an Internet Service Provider (ISP), or host it locally

Available Applets

.order

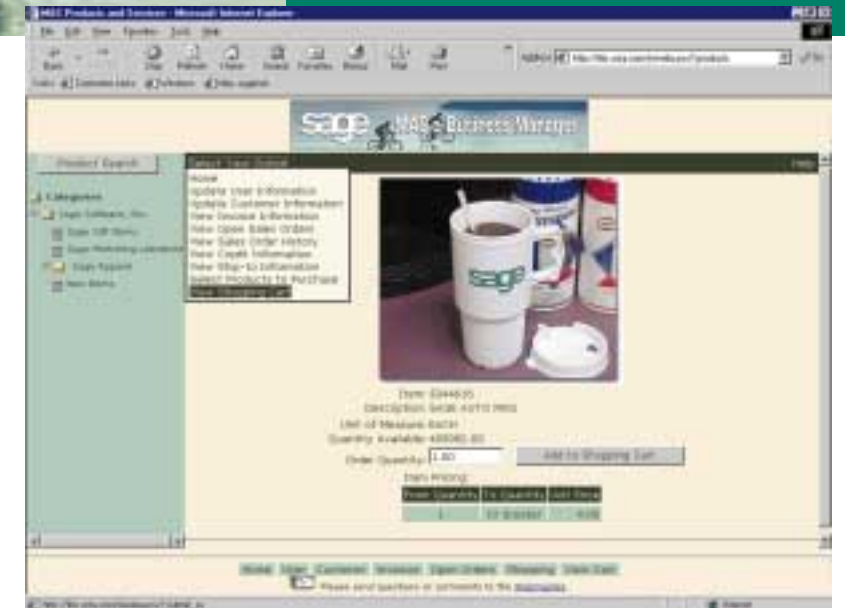
Allows you to give your customers the ability to place orders online

.inquiry

Provides your customers access to their account status, online

.store

Allows new "anonymous" customers to browse your products/services, place orders online and pay via credit card



The Internet is fast becoming the method of choice for transacting business worldwide. In the future, all of us will conduct an ever-increasing number of business transactions on-line. Applications with direct Internet functionality of this kind will be imperative in order for businesses to stay competitive and responsive in this evolving marketplace. The e-Business Manager module is the component that brings this capability to Sage's Management Accounting Series (MAS). e-Business Manager provides an affordable, out-of-the box solution for e-commerce that integrates MAS software with the World Wide Web. The e-Business Manager application has been designed so that additional functionality can be added later by plugging in "applets" that fit your specific requirements.

You can customize e-Business Manager to obtain the look and feel you require on your Web pages. It provides multiple cascading style sheets, which allows you to change the look of the entire site quickly and easily. These style sheets can be modified with the style sheet editor included in the module. Editing the provided HTML templates allows you to perform additional customization.

Designed to be put to use without the need for expensive Web consultants or custom programming, e-Business Manager can be implemented using an Internet Service Provider in a remotely hosted environment with a similar effort to setting up any MAS module. Although e-Business Manager is simple to set up, the modular design and overall architecture also make it a very powerful addition to your MAS accounting system.



Sage Software, Inc.
56 Technology Drive
Irvine, CA 92618-2301
800.854.3415
www.sage.com



SYSTEM HOSTING OPTIONS

Remote Hosting

In this scenario, the corporate Windows NT Web site resides at your Internet Service Provider (ISP), and the ISAPI plug-in for Microsoft's Internet Information Server facilitates secure communication through the firewall. Communications between the local network zone and the corporate Web server are handled via frame-relay, DSL or other dedicated connection.

There are two primary options for hosting an e-Business Manager Web site: remote hosting and local hosting.

Local Hosting

In this scenario the corporate Windows NT Web site is located within your network. Communications between the local network zone and your ISP are handled via frame-relay, DSL or other dedicated connection.

MAS Web engine:

Pentium® processor running 166 MHz or faster

Windows NT Server 4.0 with Service Pack 5 / Windows 2000 Server

128 MB RAM

Requirements may change as your web traffic increases. To achieve better performance, you can upgrade to a faster processor or add additional RAM. Consult an authorized MAS reseller and/or Microsoft certified solution provider for a list of requirements based on your individual needs. Depending upon how much activity is expected on the server, the Web engine can be the same machine that MAS currently runs on.

Microsoft® IIS Server:

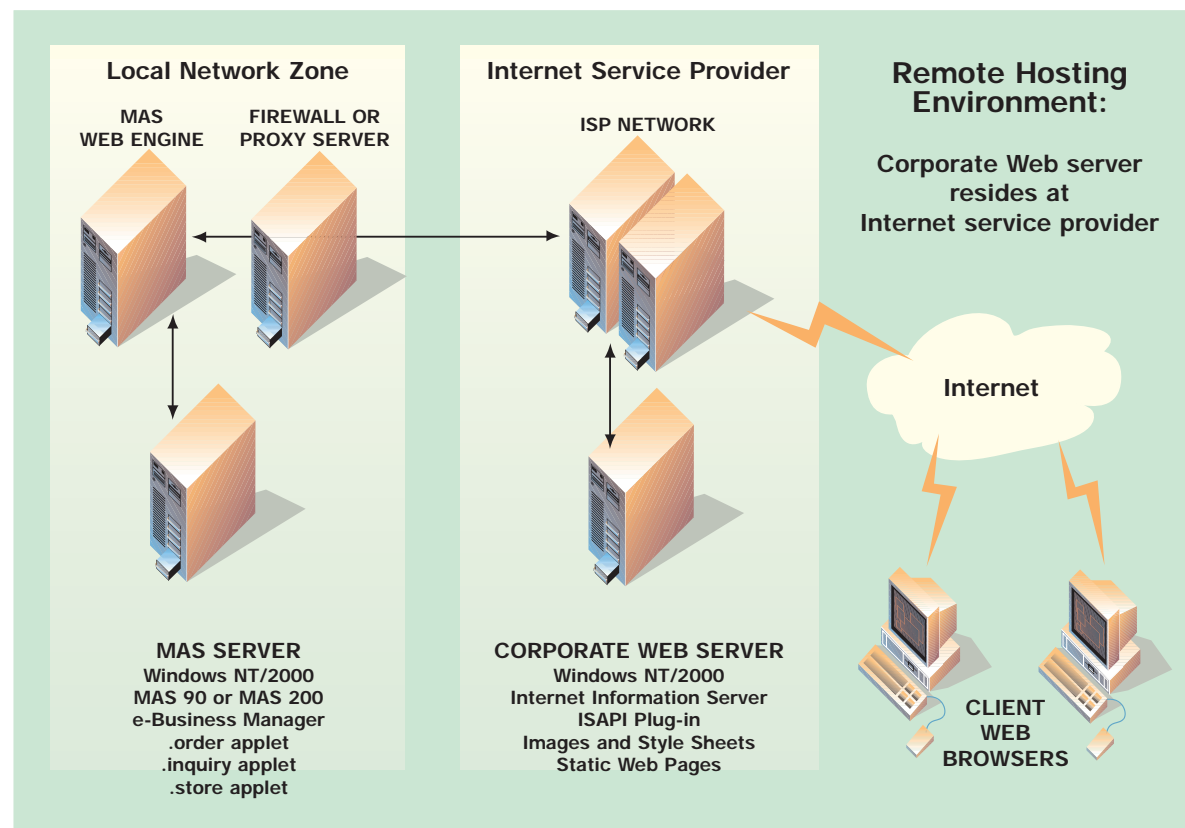
Windows NT Server 4.0 with Service Pack 5 / Windows 2000 Server

Internet Information Server 4 (from Windows NT Option Pack)/ Internet Information Server 5 for Windows 2000 Server

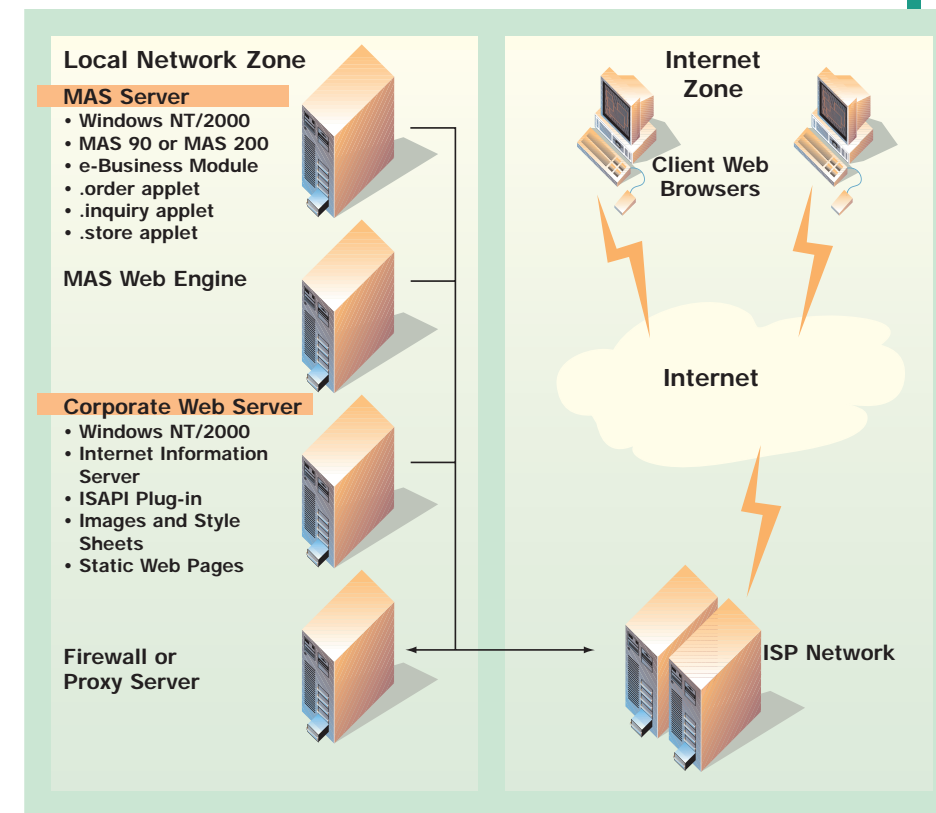
Refer to IIS documentation for additional requirements. No additional resources are required to run the ISAPI plug-in. (Not required if hosting your Web site through an ISP.)

Supported Browsers:

- Microsoft Internet Explorer 4 or higher
- Netscape® 4.06 or higher



In this example, the MAS Web engine resides on a separate Windows NT® server. Depending upon network configuration and system load, this component may co-exist with MAS or other applications.



In this example, the MAS Web engine resides on a different server.