



# F9 REPORT WRITER

## MAS 90<sup>®</sup>

for:

Windows<sup>®</sup>

Client/Server for Windows NT<sup>®</sup>

Client/Server for UNIX<sup>®</sup> Systems

### Users Praise F9

**"The ultimate in financial reporting flexibility."**

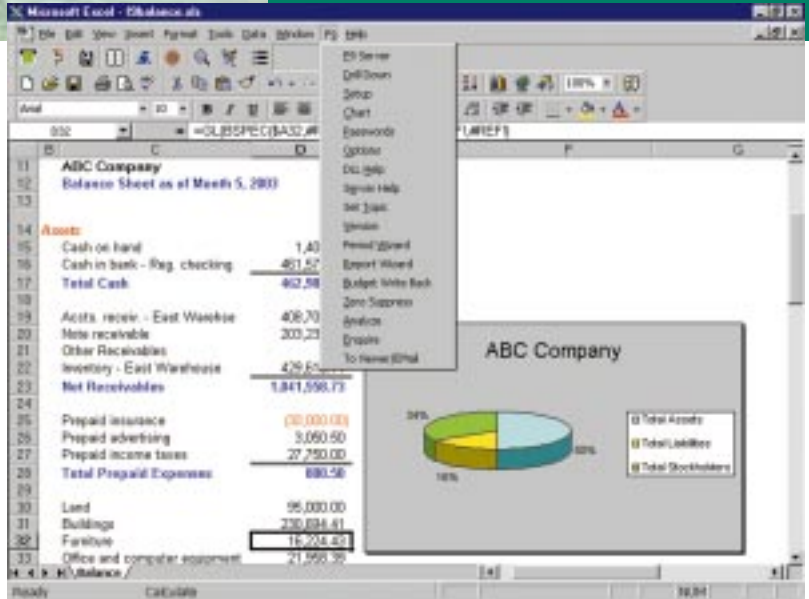
— Microbits,  
published by  
Deloitte & Touche

**"For our clients who use consolidated statements and budgets F9 is indispensable."**

— Roy J. Gowler,  
President  
ACCVantage, Inc.

**"I'm extremely excited to have found a product at last which will combine data integrity with polished presentation to management."**

— Peter Bowes,  
Accounting Manager,  
Leisure Care Retirement  
Communities



A powerful 32-bit business productivity tool, F9<sup>®</sup> uses Dynamic Data Exchange (DDE) technology to deliver data from your MAS 90 General Ledger to your favorite spreadsheet program. When you activate the unique hot link feature from within your spreadsheet, you create an automatic link to your General Ledger data — and each cell in your spreadsheet can be hotlinked to any data item in General Ledger. Real-time financial information is instantly available within your spreadsheet, and you save time by putting your existing spreadsheet expertise to best use. F9 also saves time by eliminating re-keying of data into your spreadsheet.

With F9, your spreadsheet becomes an integral part of your MAS 90 accounting system. You can easily perform a "what if" analysis to determine the effect of business decisions on your company's financial status, using up-to-the-minute information from your MAS 90 General Ledger.

System Requirements: PC running Windows NT or Windows 95/98, plus the following spreadsheet programs (not included): Lotus 1-2-3<sup>®</sup> for Windows or Microsoft<sup>®</sup> Excel<sup>®</sup> Version 4 or above. You also must have sufficient workstation memory to run the spreadsheet with which you are linking.

See reverse side for list of features



## FEATURES

Graphical Presentation of Data	The presentation of your financial information can be enhanced by taking advantage of the graphics, text and add-in capabilities of your spreadsheet.
AnyTimeSlice	You can create financial reports that span any period, even a one-week or one-day P&L if desired.
DataPreLoad	By loading all or part of your chart of accounts into memory, you can speed recalc times dramatically.
Multi-company capabilities	Access General Ledger data from any number of companies simultaneously. Simplify consolidation across departments, divisions or companies.
Drill Down	Find the origin of any number in your spreadsheet — drill down all the way to the individual transaction itself. For example, a total revenue figure can be sliced into revenue by department, by product or by location, and that information can be pasted into your spreadsheet to augment your report.
Analyze	Report out of balance? With the click of a button, F9's Analyze feature scans the entire spreadsheet, helping you troubleshoot your report by identifying missing or duplicate accounts.
Multiple Fiscal Years	You can access data from all MAS 90 fiscal years using F9.
Report Wizard	You are guided through report creation step by step; in seconds, you can create a complete financial report with all F9 functions, formulas and cell references intact.
Flexible cell reference	Suppose you have created a departmental report with one cell containing the department code (e.g., "100"). Change "100" to "100,200" and you have a two-department consolidated report. Change "100" to "*" and you have an all-departments report.
Create/Edit/Write Budgets	"Read Budget" and "Write Budget" buttons provide a mechanism for passing budgets back and forth between your General Ledger and spreadsheet. Spreadsheets are an optimal environment for creating and editing budgets, and F9 makes it easy.
Executive Information System (EIS) functionality	An EIS cost \$10,000 or more. With F9, you can drive F9 functionality from within a macro or Visual Basic program. Create dialog boxes, menus and buttons, and use them to explore your accounting numbers, just as an Executive Information System would.
GL Function Wizard	The GL Function Wizard enhances productivity and the creation of reports. The formula inserts the appropriate number of cells in the spreadsheet to build an F9 report. The GL formula contains the cell references required to complete the report.
Financial Entities	Financial Entities extends the utility of F9's formulas. GL Account Numbers may be specified, using either the segment value or its description, as they appear in the chart of accounts. You can also define your own F9 Financial Entities.
WGL Formulas	WGL Formulas allow writing budget information back to the F9 Datamart's general ledger. A single cell of information can be written back to the budget files. While Budget Write Back is for batch updates, WGL allows accounts to be updated individually.
Account Enquiry	Just launch F9, select the account(s) you want a balance from, and click the Get Balance. With Account Enquiry, you can obtain account balances from your general ledger without using your spread sheet. Makes quick queries fast and easy.

F9 is a product of Synex Systems Corporation and is distributed under license by Sage Software, Inc.