

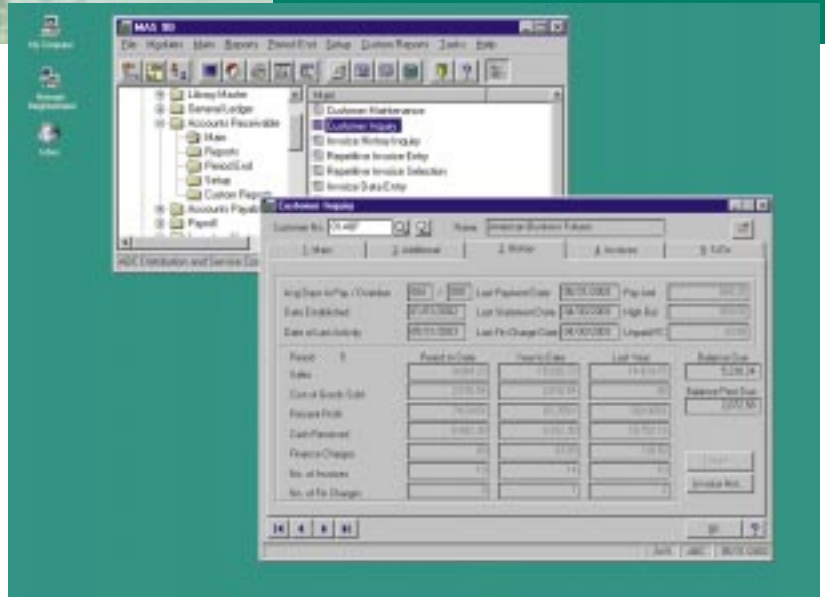


MAS 90 FOR WINDOWS

MAS 90[®]

for:
Windows[®]

We leveraged 15 years of accounting experience to create MAS 90[®] for Windows[®] — a graphical accounting software that can give you increased productivity and improved business processes. MAS 90 is easy to learn and use, offers broad accounting functionality and integrates readily with other Windows applications such as Microsoft[®] Word[®] and Excel[®]. Windows 95/98 users will recognize the MAS 90 Launcher's Explorer-like interface, which allows them to locate any accounting task quickly and easily. Finally, MAS 90 offers world-class financial and management reporting tools, superb customization capabilities and scalability for growing businesses.



Recommended System Configuration for MAS 90 for Windows

Single User/Client Workstation

SYSTEM	Processor	Memory	Add MB per user
Windows 95/98	Pentium 166 ¹	32 MB	
Windows NT [®] Workstation 4.0	Pentium 166 ¹	64 MB	
SERVER			
Windows NT Server 4.0	Pentium 166MHz ¹ or higher	64 MB (2-5 users)	4-6 MB/user
Windows NT Workstation 4.0	Pentium 166MHz ¹ or higher	64 MB (2-5 users)	5 users max.
NetWare [®] 3.12, 4.10, 4.11, 5.0	Pentium 166MHz ¹ or higher	64 MB (2-5 users)	2-3 MB/user
Windows 95/98	Pentium 166MHz ¹ or higher	64 MB (2-5 users)	5 users max.

¹ Only Intel[®] Pentium class or better processors are supportable with MAS 90.

Note: A CD-ROM drive is recommended, together with a tape backup drive. Our memory recommendation is higher for NT servers and clients because the operating system requires more memory (prior to MAS 90 for Windows considerations) than NetWare and Windows 95/98. These configurations have been thoroughly tested on systems running MAS 90 alone. We cannot guarantee acceptable performance on or support for lesser configurations. You may require a more powerful configuration if you intend to run MAS 90 plus other RAM-intensive applications at the same time, since multitasking could adversely affect your MAS 90 performance. These recommended hardware requirements are subject to change. Prior to installing the MAS 90 for Windows System Setup Disk, please review the most current Operating System/Platform Compatibility Matrix, which can be found on the Sage Software, Inc. Website at <http://www.us.sage.com/mas90w/support/charts/ospcm/default.htm>. It is also important to view the Hot Pre-Installation Issues found at <http://www.us.sage.com/mas90w/support/pre-install.htm>.



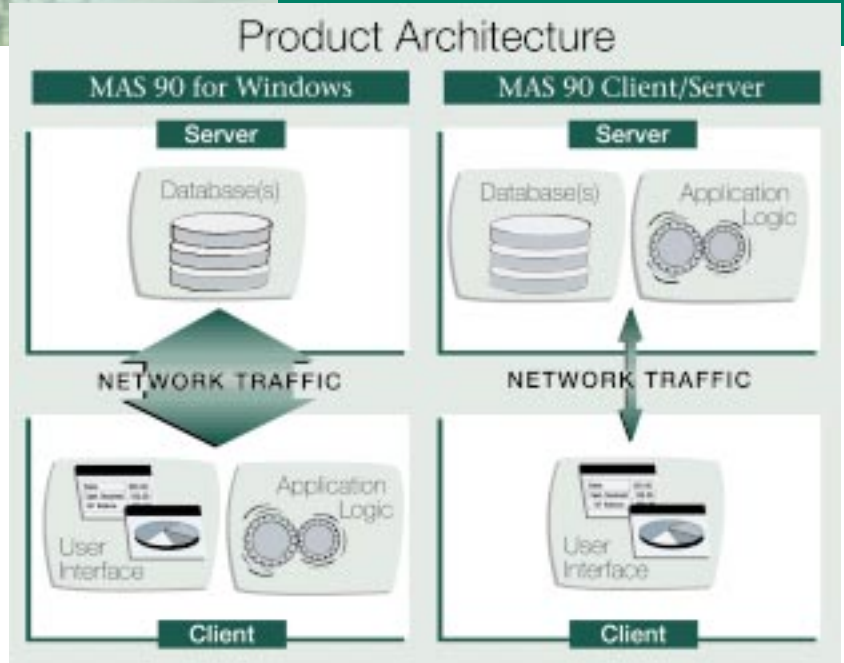
MAS 90 CLIENT/SERVER FOR WINDOWS NT

MAS 90®

for:

Client/Server for Windows NT®

Client/Server computing has become an important industry trend. MAS 90® Client/Server accounting software for Windows NT® (MAS 90 Client/Server) incorporates thin client/server technology to add new capabilities. When you choose MAS 90 Client/Server, you'll receive key benefits that only client/server architectures can provide, such as more efficient distributed processing, high performance, enhanced data integrity and reliability, remote access support and scalability for large numbers of users.



Recommended System Configuration for MAS 90 Client/Server for Windows NT

Client Workstation

SYSTEM	Processor	Memory	Add MB per user
Windows 95/98 ^{1,2,3,6,7}	Pentium 166MHz or higher	32 MB	
Windows NT Workstation 4.0 ^{1,2,3,7}	Pentium 166MHz or higher	64 MB	

SERVER

Windows NT Server 4.0 ^{2,3,4,5,7}	Pentium 166MHz or higher	64 MB (5 users)	4-6 MB/user
All Versions			

¹10MB or more of local hard drive space required for MAS 90 workstation components.

²LAN support requires networking hardware; TCP/IP protocol active.

³Remote dial-in support requires 28.8 Kbps modem(s); TCP/IP protocol active; Windows NT Remote Access Services (RAS) active on the server.

⁴Windows NT 4.0 (refer to OSPCM for Service Pack levels).

⁵1GB hard disk or larger.

⁶Windows 95/98 must be installed on the local workstation.

Requires VGA display adapter capable of 640 x 480 resolution at 256 colors. SVGA running 800 x 600 recommended.

⁷Only Intel® Pentium class or better processors are supportable with MAS 90.

Note: These configurations have been thoroughly tested on systems running MAS 90 alone. We cannot guarantee acceptable performance on or support for lesser configurations. You may require a more powerful configuration if you intend to run MAS 90 plus other RAM-intensive applications at the same time, since multitasking could adversely affect your MAS 90 performance. These requirements are subject to change. Prior to installing the MAS 90 Client/Server for Windows NT, please review the most current Operating System/Platform Compatibility Matrix, which can be found on the Sage Web site at <http://www.us.sage.com/mas90w/support/charts/ospcm/default.htm>. It is also important to view the Hot Pre-Installation Issues found at <http://www.us.sage.com/mas90w/support/pre-install.htm>.

Sage Software, Inc.
800-854-3415
www.sage.com

©1999 Sage™ Software, Inc. All rights reserved. Reproduction in whole or in part without permission is prohibited. The capabilities, system requirements and/or compatibility with third-party products described herein are subject to change without notice. Contact Sage Software for current information. MAS 90 is a registered trademark of Sage Software, Inc. Other product names used herein are trademarks or registered trademarks of their respective owners. Sage is a trademark of The Sage Group plc.

5048022 9/99 99-810/0999